

Leeds Student Accommodation, West Yorkshire

ACC Flooring was appointed by Bowmer & Kirkland, North East Regional Office to install the resin flooring package at Vita Student Accommodation in Leeds.

Part of the building was constructed as part of a hotel project which was abandoned long before completion.

The concrete substrate had been cast and unused for four years. The area was mechanically prepared by enclosed vacuum diamond grinding to remove any laitance and provide a clean surface prior to installation.

Anchor grooves were then diamond saw cut into the concrete at the edges and around the partitioning to create greater product adhesion and prevent installation failure.

ACC PUH heavy duty polyurethane screed in Charcoal was applied at 6mm. This product is trowel applied and provides a seamless, matt surface with a light slip resistance texture.

ACC PUH benefits from very high chemical resistance, high abrasion resistance, and excellent resistance to aggressive chemicals, impervious and non-tainting.

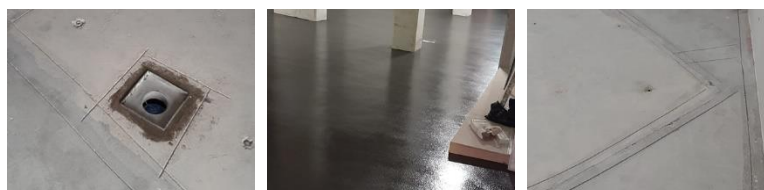
The 84m² installation was completed in a day to the delight of the client.



Project Type:
Commercial

Installation Type:
Heavy PU Screed

Finish Type:
FeRFA Type 8



01484 715400 info@accflooring.co.uk www.accflooring.co.uk

Unit 1a Woodvale Workshop, Thornhill Beck Lane, Brighouse, West Yorkshire, HD6 4AH.